

ageLOC

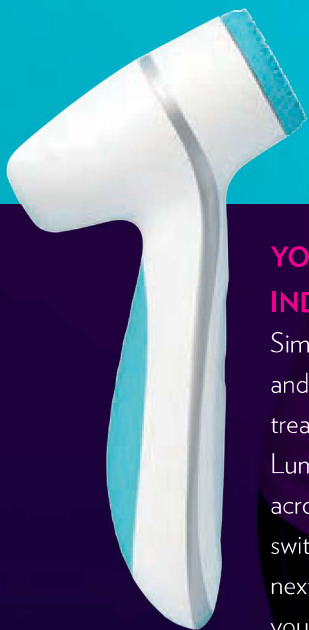
# LumiSpa™

RENEWED SKIN.  
LOCKED IN.

## INDULGE YOURSELF

Little indulgences are some of life's most rewarding luxuries. With ageLOC LumiSpa, skin care transforms into one of your everyday indulgences. This first-of-its-kind dual-action device delivers dramatic skin renewal and deep cleansing, all in a single treatment. Use morning and night to experience an energizing facial massage with results that intensify over time.

Get ready to lock in your youthful skin, for a photo finish—without the filter.



## YOUR TWO-MINUTE INDULGENCE

Simply moisten your face with water and apply cleanser. Then wet the treatment head and turn on your LumiSpa. Gently move the device across your skin using broad strokes, switching from one quadrant to the next every time the device prompts you. Once the device stops, rinse your face to reveal brighter, softer, smoother skin.

## BENEFITS

- Reveals skin that feels instantly softer and smoother after just one use
- Goes beyond cleansing to deliver a skin renewal treatment through its patent-pending counter-rotating design and ageLOC® ingredient blend
- Unique sweeping action lifts away loose cells while reducing the appearance of pores to promote dynamic skin renewal
- Provides precise, cushioned cleansing to gently remove impurities, makeup, dirt, and toxins without irritating skin
- Delivers skin benefits that intensify over time



# AGELOC ME<sup>®</sup>

EVERY DAY IS A CONFIDENT,  
BEAUTIFUL SKIN DAY.

Your style, your personality, and your complexion are your unique characteristics. So when it comes to your skin care, shouldn't it be just as unique as you are?

ageLOC Me is a first-of-its-kind, customized skin care solution. A breakthrough anti-aging product that represents the next era of skin care—skin care customized for you, by you.

It contains serums and day and night moisturizers brought together in one anti-aging system. Beyond its unique appeal, ageLOC Me features advanced Nu Skin science and a precise skin assessment. This is a personalized skin care regimen with a diverse array of product combinations, based on you, your skin concerns, and your preferences.

# THE POWER TO BE ME

## AGELOC ME® STARTER SET

The power to be me. Each of us is uniquely individual with distinctive needs. It makes sense that we should be able to easily customize something that is completely personal. Imagine anti-aging skin care as individual as you are. Now it can be with state-of-the-art technology and breakthrough anti-aging formulations. Nu Skin has redefined skin care with ageLOC Me. This is anti-aging skin care like you've never seen, felt, or imagined. ageLOC Me creates an entirely new approach to customized anti-aging skin care. Brilliant yet simple to use, ageLOC Me delivers many possible regimen combinations.

**ITEM 01010284**

## AGELOC ME® REFERENCE SET

### AGELOC ME® DAY MOISTURIZER

The perfect way to start your day, this moisturizer provides hydration to strengthen and maintain the skin's natural moisture barrier—helping to protect throughout the day.

### AGELOC ME® SERUMS

Maximize your anti-aging treatment by the power of three to improve the visible signs of aging—lines, wrinkles, uneven skin tone, firmness, and rough, dull skin—resulting in a noticeably healthier, younger looking you.

**ITEM 01001643 0.4 oz.**

### AGELOC ME® NIGHT MOISTURIZER

Specifically formulated to rejuvenate as you sleep, night moisturizer calms and soothes the skin while aiding the natural nighttime recovery process.







# CORE SYSTEMS

---

Nu Skin's core skin care systems—ageLOC® Transformation, Nu Skin 180®°, Nu Skin Tri-Phasic White®, Nutricentials®, and Nu Skin Clear Action®—are designed to meet the individual needs of your skin. For beautiful and youthful looking skin at any age, your regimen begins here.

# AGELOC® TRANSFORMATION

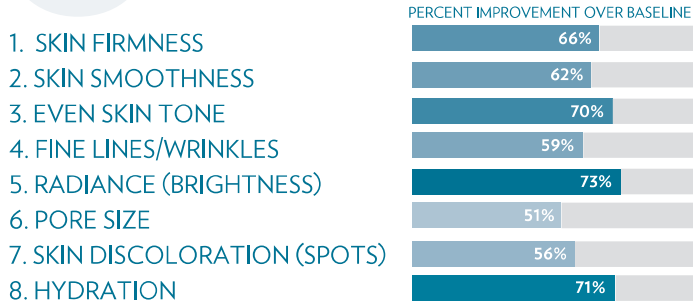
ADVANCED ANTI-AGING SYSTEM

Target aging at its source. ageLOC Transformation is a powerful anti-aging skin care regimen that reveals younger looking skin 8 ways in 7 days—for a more youthful, healthier looking you, now and in the future.

## AGELOC® FUTURE SERUM THIRD-PARTY STUDY RESULTS

As part of your anti-aging regimen, ageLOC Future Serum provides amazing skin benefits in 8 significant ways:

### SELF-PERCEPTION DATA AT 12 WEEKS



## AGELOC® ELEMENTS

Includes ageLOC Gentle Cleanse & Tone, ageLOC Radiant Day, and ageLOC Transforming Night.

ITEM 01003887

## AGELOC® TRANSFORMATION

Includes ageLOC Gentle Cleanse & Tone, ageLOC Future Serum, ageLOC Radiant Day, and ageLOC Transforming Night.

ITEM 01003888

## AGELOC® GENTLE CLEANSE & TONE

An effective time saver, this dual-action formula helps maintain skin's natural healthy pH and delivers an infusion of ageLOC to the skin, targeting the sources of aging while leaving skin feeling refreshed and youthful.

ITEM 01003882 2 fl. oz.

## AGELOC® FUTURE SERUM

This powerful, clinically tested formula reveals younger looking skin in eight ways, combining the benefits of many different anti-aging products into a single product. ageLOC Future Serum—for a younger looking you.

ITEM 01003883 1 fl. oz.

## AGELOC® RADIANT DAY BROAD SPECTRUM SPF 22

This silky-smooth formula contains ingredients that protect against sun damage with SPF 22, stimulate youthful cell turnover for a smoother, softer texture, and reduce the appearance of fine lines and wrinkles—delivering radiant skin.

ITEM 01003904 .85 fl. oz.

## AGELOC® TRANSFORMING NIGHT

A rich hydrating cream that reduces the look of fine lines, wrinkles, and pores, so you wake to glowing, supple skin.

ITEM 01003880 1 fl. oz.



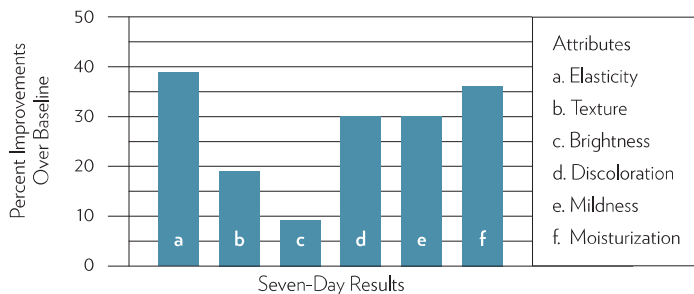
# NU SKIN 180°

ANTI-AGING SKIN THERAPY SYSTEM

Decide today to look younger with the 180° Anti-Aging Skin Therapy System. Polyhydroxy acids (PHAs) provide gentle and effective chemical exfoliation, leaving your skin rejuvenated and younger looking. Nu Skin 180° is clinically proven to refine texture, even skin tone, and diminish the appearance of fine lines and wrinkles for an overall more youthful appearance.

## NU SKIN 180° SYSTEM EIGHT-WEEK CLINICAL STUDY

In a clinical study conducted at a third-party testing lab, clinical graders assessed the skin improvements of 25 participants. According to the clinical grader assessments, participants exhibited improvement in the following attributes:



## NU SKIN 180° ANTI-AGING SKIN THERAPY SYSTEM

Includes 180° Face Wash, 180° Skin Mist, 180° Cell Renewal Fluid, 180° UV Defense Hydrator, and 180° Night Complex.

ITEM 01101255

## NU SKIN 180° FACE WASH

Nu Skin 180° Face Wash contains 10 percent active, efficacious vitamin C, making it a potent tool against multiple signs of aging. In addition to targeting age spots and discoloration, this rich, creamy formula helps diminish the appearance of wrinkles and firm the skin.

ITEM 01101251 4.2 oz.

## NU SKIN 180° SKIN MIST

Features di- and tri-peptides from hydrolyzed rice protein to protect against future wrinkling and loss of firmness. Mushroom extract refines and tightens pores as the exclusive, soothing HMW complex calms and protects skin.

ITEM 01101253 3.4 oz.

## NU SKIN 180° CELL RENEWAL FLUID

Gently but effectively accelerates the cell turnover process, provides antioxidant protection, and enhances skin hydration to smooth texture and diminish the appearance of fine lines and wrinkles.

ITEM 01101250 1 oz.

## NU SKIN 180° UV DEFENSE HYDRATOR BROAD SPECTRUM SPF 18

Formulated with light-activated photosomes—enzymes from marine plankton—this moisturizing sunscreen diminishes signs of past sun damage while defending skin against future harm.

ITEM 01101254 1 oz.

## NU SKIN 180° NIGHT COMPLEX

Created to enhance the skin's cellular recovery process while you sleep, this rich nighttime moisturizer protects against free radical damage and strengthens the skin's protective barrier.

ITEM 01101252 1 oz.

## NU SKIN 180° AHA FACIAL PEEL AND NEUTRALIZER

This scientifically proven formula sweeps away the appearance of aging and sun damage without the recovery time required by aggressive clinical peels. Effective alone or as part of your Nu Skin 180° System.

ITEM 01101249 2 jars



# TRI-PHASIC WHITE®

SKIN BRIGHTENING SYSTEM

Nu Skin Tri-Phasic White® is a comprehensive skin brightening system containing five products that target all three critical phases of the discoloration process. Nu Skin Tri-Phasic White is a clinically proven skin brightening system to help you achieve even-toned, glowing skin.

## TRI-PHASIC WHITE® SYSTEM

Includes Tri-Phasic White Cleanser, Tri-Phasic White Toner, Tri-Phasic White Essence, Tri-Phasic White Day Milk Lotion, and Tri-Phasic White Night Cream.

**ITEM 01102734**

## TRI-PHASIC WHITE® CLEANSER

A pearlescent, moisturizing mousse cleanses and brightens skin for a fresh, luminous appearance. This advanced cleanser also works to improve skin tone and texture while leaving skin feeling silky-soft.

**ITEM 01102729 3.4 oz.**

## TRI-PHASIC WHITE® TONER

Helps diminish the appearance of hyperpigmentation on the surface of the skin and provides powerful antioxidants to leave skin with a luminous and even tone.

**ITEM 01102733 4.2 oz.**

## TRI-PHASIC WHITE® ESSENCE

This proprietary combination of ingredient technologies works in multiple ways to illuminate your complexion by reducing the appearance of existing dark spots, uneven skin tone, and discoloration.

**ITEM 01102730 1 oz.**

## TRI-PHASIC WHITE® DAY MILK LOTION BROAD SPECTRUM SPF 15

This advanced formula works to reduce discoloration and provides broad spectrum UVA/UVB protection to effectively protect the skin from ultraviolet rays that generate uneven skin tone.

**ITEM 01102731 2.5 oz.**

## TRI-PHASIC WHITE® NIGHT CREAM

Features ingredients to calm and soothe the skin and reveals a more brilliant skin tone as you sleep.

**ITEM 01102732 1 oz.**

## TRI-PHASIC WHITE® RADIANCE MASK

A premoistened, skin brightening mask that helps reduce the appearance of skin discoloration and helps maintain a translucent skin tone.

**ITEM 01102775 8 masks**



## NUTRICENTIALS® SYSTEM Normal to Dry Skin

Includes Creamy Cleansing Lotion, pH Balance Toner, Celltrex Ultra, Moisture Restore Day Protective Lotion, and Night Supply Nourishing Cream.

**ITEM 01100858**



### CREAMY CLEANSING LOTION

This mild, soap-free cleanser gently removes debris and skin pollutants for a soft, comfortable, clean feeling. It offers intense nourishment to rejuvenate skin and keep even the driest, most delicate skin soft and hydrated.

**ITEM 01110310 5 oz.**

### PH BALANCE TONER

Diminishes the appearance of pores so skin appears refined and refreshed and contains strawberry extract rich in polyphenol to soothe skin.

**ITEM 01110312 5 oz.**

### CELLTRETREX® ULTRA RECOVERY FLUID

Contains patented polyphenol hydroxytyrosol, the most powerful component of Mediterranean olive oil, which scavenges skin aging free radicals. Just a few drops of Celltrex® Ultra keeps your skin looking supple, firm, and healthy.

**ITEM 01102700 .5 oz.**

### MOISTURE RESTORE DAY PROTECTIVE LOTION BROAD SPECTRUM SPF 15 Normal to Dry Skin

Features colorless carotenoids that offer heightened protection against light-induced free radical damage. Added SPF protection against UVA and UVB rays also helps fight against premature aging caused by the sun, resulting in a high-performance lotion that hydrates, protects, and promotes vibrant, healthy looking skin all day, every day.

**ITEM 01102728 1.7 oz.**

## NUTRICENTIALS® SYSTEM Combination to Oily Skin

Includes Pure Cleansing Gel, pH Balance Mattefying Toner, Celltrex Ultra, Moisture Restore Day Protective Mattefying Lotion, and Night Supply Nourishing Cream.

**ITEM 01100859**



### PURE CLEANSING GEL

This nutrient-rich cleansing gel contains the Nutricentials® ingredient papain—an enzyme from papaya that breaks down the debris of dead cells, oil, makeup, and skin pollutants to free clogged pores. This soap-free, foaming formula helps control oil without over drying and leaves skin feeling fresh, clean, and energized.

**ITEM 01110309 5 oz.**

### PH BALANCE MATTEFYING TONER

Diminishes the appearance of pores so skin appears refined and refreshed and contains strawberry extract rich in polyphenol to soothe skin. Oil-absorbing mineral powder provides an instant matte finish and controls shine.

**ITEM 01110313 5 oz.**

### MOISTURE RESTORE DAY PROTECTIVE MATTEFYING LOTION BROAD SPECTRUM SPF 15 Combination to Oily Skin

Features colorless carotenoids that offer heightened protection against light-induced free radical damage. Added SPF protection against UVA and UVB rays also helps fight against premature aging caused by the sun, resulting in a high-performance lotion that hydrates, protects, and promotes vibrant, healthy looking skin all day, every day.

**ITEM 01102727 1.7 oz.**

### NIGHT SUPPLY NOURISHING CREAM

Optimize your skin's repair process at night. Featuring patented phosphatidylcholine, derived from soy, Night Supply Nourishing Cream helps reinforce cell membranes and restore flexibility and resiliency to the skin while you sleep.

**ITEM 01102705 1.7 oz.**

# NU SKIN CLEAR ACTION®

ACNE MEDICATION SYSTEM

Created to help clear the signs of past and present breakouts and to ensure the future health of your complexion,

Nu Skin Clear Action® is a comprehensive system to manage the full range of effects acne can have on your skin.

## NU SKIN CLEAR ACTION® ACNE MEDICATION SYSTEM

Includes Clear Action Cleanser, Clear Action Toner, Clear Action Day Treatment, and Clear Action Night Treatment.

**ITEM 01110391**

## NU SKIN CLEAR ACTION® ACNE MEDICATION FOAMING CLEANSER

This unique cleanser is formulated to disrupt the breakout-causing union of oil and debris. You know it's working as the foam bubbles and changes from white to clear. Featuring salicylic acid to clear pores and reduce most breakouts, this cleanser leaves your skin fresh and clean without feeling tight or dry.

**ITEM 01110388 3.4 oz.**

## NU SKIN CLEAR ACTION® ACNE MEDICATION TONER

This toner calms the skin and manages present oil levels, promoting a shine-free, clear complexion. Licorice extract soothes irritated skin, while zinc PCA helps control sebum levels. A special union of vitamins C and E replenishes the natural antioxidant supply that is lost when your skin is fighting breakouts.

**ITEM 01110387 5 oz.**

## NU SKIN CLEAR ACTION® ACNE MEDICATION DAY TREATMENT

This lightweight gel penetrates pores and dissolves clogs. While mandelic acid gently exfoliates the skin to reduce discoloration and other signs of past acne, white tea extract, a powerful antioxidant, restores skin's natural resiliency.

**ITEM 01110389 1 oz.**

## NU SKIN CLEAR ACTION® ACNE MEDICATION NIGHT TREATMENT

Helps you wake up to healthier looking skin and minimizes the signs of breakouts while you sleep. Salicylic acid clears pores while retinol and patented alpha lipoic acid work to diminish the appearance of remnant marks (uneven skin texture and discoloration) associated with past breakouts for a smooth, clear, evenly toned complexion.

**ITEM 01110390 1 oz.**









# TARGETED TREATMENTS

---

Are you ready to look, feel, and live younger? We've unlocked the future of skin care with revolutionary anti-aging personal care products. These powerful products target aging to help you unlock the secret to a younger looking you—today and in the future.

# SPA SYSTEMS

## FACIAL SPA PACKAGE

Nu Skin has unlocked the future of skin care with its in-home spa, the Nu Skin® Facial Spa with Conductive Gel. Using microcurrent technology, this powerful combination stimulates and tones the skin resulting in an improved appearance.

*Includes 1 Nu Skin Facial Spa, 1 Nu Skin Conductive Gel, 1 ageLOC Rejuvenating Gel Mask, 1 NaPCA Moisture Mist, 1 ageLOC Gentle Cleanse & Tone, 1 ageLOC Radiant Day Broad Spectrum SPF 22, 1 DVD, and 1 Brochure.*

**ITEM 01010036**

## NU SKIN® CONDUCTIVE GEL

Specifically formulated for use with the Nu Skin Facial Spa, Nu Skin Conductive Gel ensures adequate conductivity throughout your spa session, while helping the Nu Skin Facial Spa glide across the skin.

**ITEM 01003913 5 oz.**

## AGELOC® REJUVENATING GEL MASK

Reveal refreshed, hydrated, and incredibly soft skin with ageLOC Rejuvenating Gel Mask. Now you can revitalize, rejuvenate, and soothe your skin for a fresh and supple feel.

**ITEM 01103243 1.6 oz.**

## AGELOC® BODY SHAPING GEL

For a more contoured, firmer, smoother you. ageLOC Body Shaping Gel is a luxurious quality treatment that smooths and helps improve the overall appearance of the skin.

**ITEM 01003902 5 oz.**

## AGELOC® DERMATIC EFFECTS

Scientifically formulated to bring ageLOC anti-aging benefits to the body every day, ageLOC Dermatic Effects helps smooth the appearance of skin and improve the appearance of skin firmness. This daily contouring moisturizer helps promote cell turnover, returning skin to its natural radiance.

**ITEM 01003903 5 oz.**

## AGELOC® FACIAL GELS

The Facial Gels feature ageLOC—a proprietary ingredient blend that targets aging at its source. The result: skin that immediately feels refreshed, hydrated, and incredibly soft and clean.

**ITEM 01003876**



# TRU FACE®

## TRU FACE® LINE CORRECTOR

Tru Face Line Corrector helps soften the appearance of lines around your mouth, eyes, and forehead. This targeted approach helps diminish the most aggressive signs of aging while still being gentle and safe for all skin types.

**ITEM 01102704 1 oz.**

## TRU FACE® INSTANT LINE CORRECTOR

Immediately diminish the appearance of lines and wrinkles for up to 12 hours. Featuring GABA, a natural amino acid that fills and relaxes facial lines, this powerful cream quickly and safely reduces the effects of years of habitual facial movements.

**ITEM 01101257 .5 oz.**

## TRU FACE® IDEALEYES®

Scientifically formulated to offer both immediate and long-term benefits, this silky cream rapidly reduces the appearance of bags under the eyes while instantly increasing skin radiance. The advanced anti-aging ingredient technology also helps firm and smooth skin as it reduces discoloration under the eyes.

**ITEM 01101241 .5 oz.**

## TRU FACE® REVEALING GEL

A kinder, gentler approach to revealing a smooth, more youthful looking complexion. This formula features the polyhydroxy acids (PHAs) that chelate excess metal ions for a radiant skin tone, bind to moisture for enhanced hydration, and provide powerful antioxidant protection.

**ITEM 01101213 1 oz.**

## TRU FACE® SKIN PERFECTING GEL

Tru Face Skin Perfecting Gel combats the earliest signs of environmental aging by helping to prevent the breakdown of collagen and elastin.

**ITEM 01102698 1 oz.**

## TRU FACE® PRIMING SOLUTION

Featuring Premocin, a proprietary ingredient blend, this primer enhances the delivery of key benefits. Also formulated with a scientific selection of 15 different amino acids, Tru Face® Priming Solution supplies skin-essential protein building blocks for a youthful looking complexion.

**ITEM 01101232 4.2 oz.**

## THE SCIENCE OF YOUTH PACKAGE

Featuring Tru Face Priming Solution, ageLOC Tru Face® Essence Ultra, and Tegreen 97®, this package provides a revolutionary, nonsurgical method to help improve skin firmness.

**ITEM 01104100**

## FACE LIFT WITH ACTIVATOR

Face Lift works immediately to temporarily lift and tighten the face and neck for a firmer, more youthful appearance. Use several times a week for a temporary “lift” – everyone will notice you look years younger.

### POWDER AND LIFT ACTIVATOR

**ITEM 01110262 original**  
**ITEM 01110265 sensitive**

### POWDER ONLY

**ITEM 01110263 original 2.60 oz.**  
**ITEM 01110266 sensitive 2.60 oz.**

### ACTIVATOR ONLY

**ITEM 01110264 original 4.2 oz.**  
**ITEM 01110267 sensitive 4.2 oz.**

## FAN LIFT BRUSH

Provides easy mixing and even application of Face Lift.

**ITEM 0000265 3-pack**

## AGELOC® TRU FACE® ESSENCE ULTRA

Nu Skin's firming specialist formulated with the power of Ethocyn®\* now also employs our revolutionary anti-aging science, targeting the sources of aging that can lead to the loss of firmness.

**ITEM 01003906 60 capsules**

\* Ethocyn is a registered trademark of BCS







ageLOC®  
**TRU FACE**®  
ESSENCE  
DUET

## IT'S TIME TO FACE YOUR NECK AND DÉCOLLETÉ

### TAKE YOUTH AND BEAUTY TO ANOTHER LEVEL

ageLOC Tru Face Essence Duet is a dual-chamber system that combines two powerful formulas mixed at the moment of use to bring ageLOC ingredients and benefits to the neck and décolleté. The skin in this vulnerable area is prone to unique signs of aging, so the silky smooth formula is designed to promote skin contouring, helping to limit the loss of elasticity.

By contouring the skin for a smoother look, ageLOC Tru Face Essence Duet improves the appearance of the skin's surface and promotes skin radiance. Don't let your neck and décolleté look older than your face. Enjoy contoured, brighter, and younger looking skin with ageLOC Tru Face Essence Duet.

**ITEM 01001570 1 oz.**

### FEATURES

- Contains ageLOC® which targets the sources of aging to preserve the look of youth and reduce the appearance of aging
- Formulated to contour and tone the décolleté
- Designed to increase the appearance of contoured, tight skin on the neck
- Provides advanced moisturization and smoothness
- Helps promote skin cell turnover to improve the skin's texture
- Contours the skin for a smoother look which improves the appearance of the skin's surface, promoting radiance

### BECOME A TRU BELIEVER

A single pump each morning and evening is all you need. Dispense this silky product onto your fingertips, gently smooth over your neck and décolleté areas, and enjoy more contoured and toned skin.

# PEELS, MASKS, & SCRUBS

Nu Skin® Polishing Peel, masks, and scrubs rejuvenate dull, tired skin by drawing out impurities, removing dulling cell buildup, and promoting cell turnover.

## POLISHING PEEL

Enjoy skin smoothing results clinically proven to be equivalent to a professional microdermabrasion session without ever leaving home. Polishing Peel features pumpkin enzymes to resurface, soften and polish the skin, and bentonite clay to remove dull skin cells and toxins.

**ITEM 01101215 1.7 oz.**

## CREAMY HYDRATING MASQUE

This nourishing face and neck mask is a hydration magnet that binds moisture to the skin to reduce dryness and bring out a natural, dewy glow. As it moisturizes, it infuses soothing nutrients into the skin to keep it looking healthy, beautiful, and radiant.

**ITEM 01102711 3.4 oz.**

## CLAY PACK

Clay Pack is a deep cleansing facial mask that helps reduce shine and blackheads. Natural Kaolin clay draws out excess oil and pore clogging impurities, leaving skin smooth and soft.

**ITEM 01101192 3.4 oz.**

## EXFOLIANT SCRUB

Reveal smooth, even skin through gentle exfoliation. With natural marine diatoms (fossilized algae), Exfoliant Scrub gently smooths the skin's surface by releasing dead cell build-up and pore-blocking impurities.

**ITEM 01102707 3.4 oz.**

## FACIAL SCRUB

High-power exfoliation for ruddy complexions. With ground walnut shell powder, Facial Scrub helps smooth and soften skin that has become coarse.

**ITEM 01102709 3.4 oz.**

## EPOCH® GLACIAL MARINE MUD

This skin renewing estuary treasure helps exfoliate dead skin cells, remove skin contaminants, and rejuvenate damaged or troubled skin. It nurtures your skin with more than 50 beneficial minerals and trace elements, including zinc and sea botanicals.

**ITEM 01110809 7 oz.**



# ENVIRONMENTAL DEFENSE

Antioxidant-rich nourishing serums and advanced sunscreen ingredients protect and replenish with anti-aging benefits.

## SUNRIGHT®

Sunright skincare products provide excellent sun and environmental protection with the benefits of anti-aging ingredients. Sun exposure can have damaging consequences, including premature aging of the skin. Protect your entire family with these water-resistant, non-greasy, broad spectrum sunscreens.

SUNRIGHT 35

**ITEM 01001344 3.4 oz.**

SUNRIGHT 50

**ITEM 01001345 3.4 oz.**

SUNRIGHT LIP BALM BROAD SPECTRUM SPF 15

**ITEM 01110369 .15 oz.**

## CELLTRET® COQ10 COMPLETE

Celltret® CoQ10 Complete promotes cellular vitality, allowing your skin to rebound beautifully from daily oxidative stress for a radiant, youthful appearance.

**ITEM 01131809 .5 oz.**

## CELLTRET® ULTRA RECOVERY FLUID

Contains patented polyphenol hydroxytyrosol, the most powerful component of Mediterranean olive oil, which scavenges skin-aging free radicals. Just a few drops of Celltret® Ultra keeps your skin looking supple, firm, and healthy.

**ITEM 01102700 .5 oz.**



# HYDRATE & REPLENISH

From light to rich, these facial moisturizers can be added to your core daily regimen to help you achieve the right hydration for a healthier appearance.

## LIGHT MOISTURIZATION

### NAPCA MOISTURE MIST

Dewy-fresh skin is just a spray away. Packed with natural moisture-binding ingredients like NaPCA, hyaluronic acid, and urea, this formula keeps your skin feeling fresh. The cool, refreshing mist is also ideal for the body and hair.

**ITEM 01101226 8.4 oz.**

## ENHANCER SKIN CONDITIONING GEL

With conditioning panthenol and soothing aloe vera, Enhancer Skin Conditioning Gel soothes the skin and prevents moisture loss. Use liberally to keep skin comfortable and support its natural, healthy moisture balance.

**ITEM 01110308 3.4 oz.**

## MEDIUM MOISTURIZATION

### NAPCA MOISTURIZER

Humectants help skin hold on to precious moisture. With vitamin E and the natural humectant NaPCA, this cream is absorbed quickly to supplement skin's own moisture-binding capacity. The dewy-light after-feel of NaPCA Moisturizer makes it ideal for all skin types.

**ITEM 01110257 2.5 oz.**

## INTENSIVE EYE COMPLEX

Maintain proper moisture levels in the delicate eye area to reflect a more youthful, vibrant appearance. This intense moisturizer enhances the skin's natural ability to absorb and retain moisture, instantly softening the appearance of fine lines and wrinkles.

**ITEM 01101233 .5 oz.**

## RICH MOISTURIZATION

### REJUVENATING CREAM

Formulated to address the special needs of dry skin, Rejuvenating Cream drenches skin in soothing moisture, improving the skin's moisture-binding capabilities with the hydrating power of hyaluronic acid.

**ITEM 01110258 2.5 oz.**

## MOISTURE RESTORE INTENSE MOISTURIZER

A luxuriously rich, intense moisturizer—perfect for dry or mature skin. Featuring nourishing pistachio oil, soothing aloe vera, and free radical-fighting vitamin E to help fortify and condition skin prone to extreme dryness, this concentrated cream leaves skin soft and supple.

**ITEM 01111259 2.5 oz.**

## SHAVING DIVIDENDS® SHAVE CREAM

Now you can cleanse, exfoliate, and condition all in one step as you shave with Dividends Shave Cream. This concentrated lather gently removes dirt and oil, and optimizes razor glide for a clean, smooth shave that makes your skin look and feel great.

**ITEM 01101456 7 oz.**

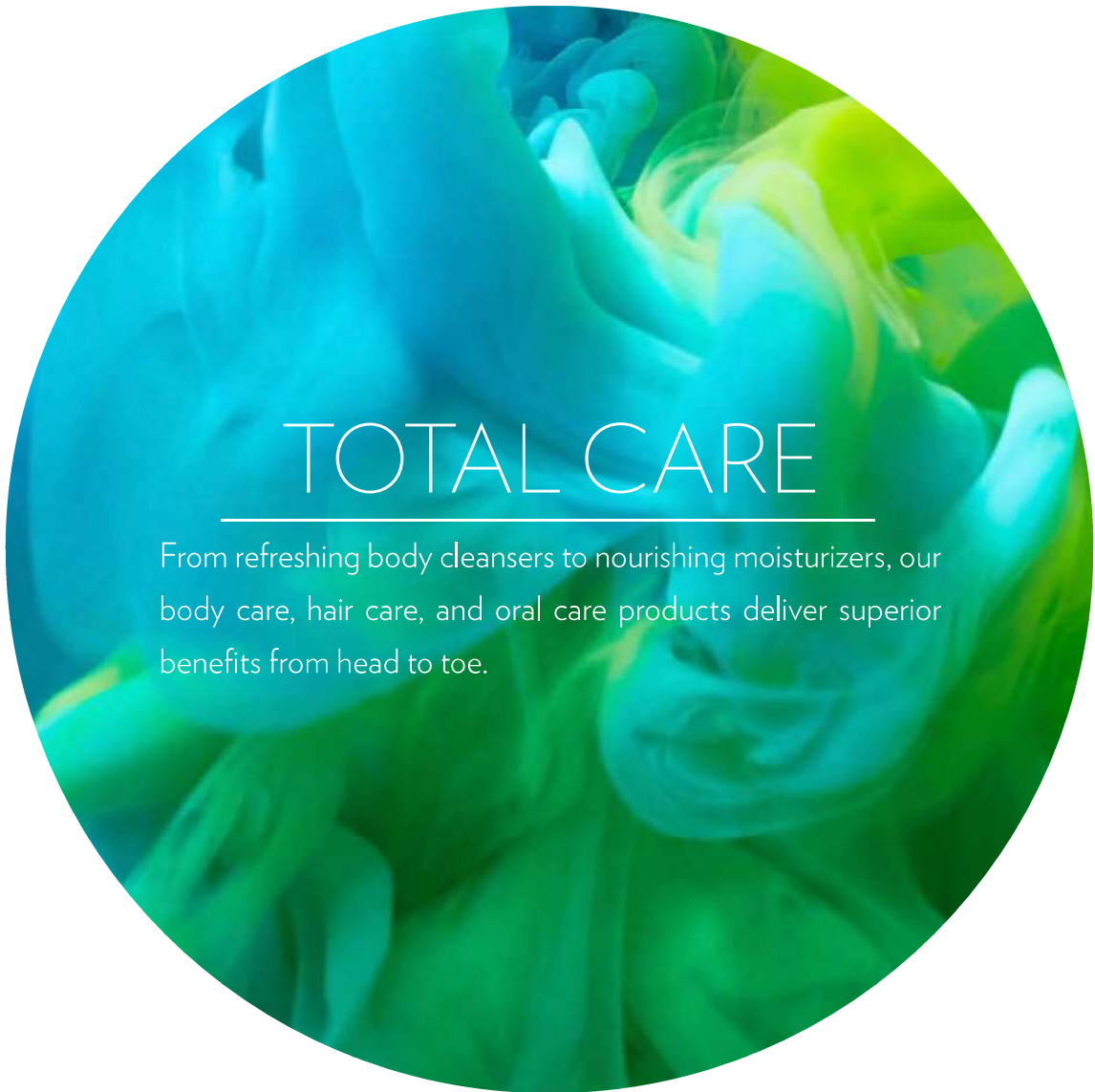
## DIVIDENDS® AFTERSHAVE BALM

This lightweight balm makes facial hair softer, finer, and less noticeable so the results of your morning shave last longer. Also prevents razor bumps, and cools and soothes the skin.

**ITEM 01101457 1.7 oz.**







# TOTAL CARE

---

From refreshing body cleansers to nourishing moisturizers, our body care, hair care, and oral care products deliver superior benefits from head to toe.

# HAIR CARE

## MOISTURIZING SHAMPOO

Featuring cotton bloom extract, natural sterols, and shea butter, this nourishing cleanser loads your locks with essential moisture, restoring strength to the cortex for radiantly replenished hair.

**ITEM 01101350 8.4 oz.**

**ITEM 01101325 33.8 oz.**

## BALANCING SHAMPOO

Now you can gently remove impurities with balanced hydration and return the look of youthful strength and health to your hair.

**ITEM 01101351 8.4 oz.**

**ITEM 01101326 33.8 oz.**

## CLARIFYING SHAMPOO

Formulated with shea butter seedcake extract, this powerful cleanser attaches to buildup—including nicotine, chlorine, and environmental pollutants— and washes away the signs of aging.

**ITEM 01101352 8.4 oz.**

## RENU HAIR MASK

This deep conditioning treatment provides critical hydration by penetrating the hair shaft and tripling the strength of damaged hair. It prevents split ends and breakage, making hair smooth, shiny, and manageable for up to seven days.

**ITEM 01101356 3.5 oz.**

## RICH CONDITIONER

While shea butter drenches the hair with lipids that mimic natural oils, meadowfoam repairs damage and prevents breaking and weakening so your hair behaves, feels, and looks like younger, shinier hair.

**ITEM 01101354 8.4 oz.**

**ITEM 01101328 33.8 oz.**

## WEIGHTLESS CONDITIONER

Nu Skin Weightless Conditioner gives you luscious conditioning without dragging your hair down. This unique formula improves the condition of the hair shaft, promoting younger looking hair that feels full and looks radiant.

**ITEM 01101353 8.4 oz.**

**ITEM 01101327 33.8 oz.**

## NUTRIOL®

To help ensure a lifetime of healthy looking hair, Nutriol Hair Fitness Treatment and Nutriol Shampoo promote abundant, healthy looking hair by enhancing the vitality of your hair and scalp with patented technology.

Nutriol Hair Fitness Treatment

**ITEM 01101218 12 VIALS**

Nutriol Shampoo

**ITEM 01101219 4.2 oz.**



# BODY CARE

## BODY CARE ESSENTIALS PACKAGE

This set includes Perennial® Intense Body Moisturizer, Liquid Body Lufra, and Liquid Body Bar.

**ITEM 01102463**

## PERENNIAL® INTENSE BODY MOISTURIZER

A body moisturizer that helps to reinforce the skin's natural defense mechanisms and protect against external aggressors. Help your skin remain comfortable and healthy looking year round.

**ITEM 01100875 8.4 oz.**

## BODY SMOOTHER

Seal in moisture after showering or bathing. This quick-absorbing body lotion locks in moisture to prevent tightness while nourishing skin with aloe vera, algae extract, and vitamins A and E.

**ITEM 01101239 8.4 oz.**

## HAND LOTION

Skin drinks in this light lotion so your hands are left soft and hydrated. Pamper your hands with the perfect blend of softening conditioners and moisture-attracting humectants for a softer, smoother touch.

**ITEM 01110329 4.2 oz.**

## BODY BAR

This is a gentle yet effective cleanser in the traditional form of a bar, but with additional skin softening benefits. pH balanced Body Bar is an 100% soap-free cleanser scientifically formulated to condition the skin and help protect against dryness. (Great for the entire family.)

**ITEM 01110353 4 oz. bar**

**ITEM 01110354 5-pack**

## LIQUID BODY BAR

The aromatic grapefruit scent captures your senses while the rich and creamy soap-free formula effectively removes dirt, oil, and impurities. Featuring a unique blend of humectants to drench your skin with conditioning moisture, Liquid Body Bar offers a better kind of clean, conditioning moisture.

**ITEM 01101216 8.4 oz.**

**ITEM 01101217 16.9 oz.**

## LIQUID BODY LUFRA

Liquid Body Lufra is an all-over body exfoliant that gently eases away dead skin cells and excess oil to give your skin a healthy, polished appearance and feel. Liquid Body Lufra revitalizes skin, giving it a luminous glow.

**ITEM 01102717 8.4 oz.**

## BODY CLEANSING GEL

For skin that feels clean, fresh, and soft, use this gentle soap-free cleansing gel, which combines mild cleansers with natural aloe vera to cleanse and condition.

**ITEM 01101223 8.4 oz.**

**ITEM 01101224 16.9 oz.**

## HERBAL MINERAL BATH

Herbal Mineral Bath contains 21 herbal extracts. While many of these extracts create a relaxing aromatherapeutic atmosphere to melt away stress and tension, the others provide skin nourishing and conditioning benefits for a luxuriously soft and silky after-bath feel from head to toe.

**ITEM 01101225 16.9 oz.**



# ORAL CARE

## AP-24® ORAL CARE SYSTEM

Includes AP-24 Whitening Fluoride Toothpaste, AP-24 Anti-Plaque Fluoride Toothpaste, AP-24 Anti-Plaque Fluoride Mouthwash, AP-24 Anti-Plaque Breath Spray, and AP-24 Anti-Plaque Toothbrush.

**ITEM 01111150**

## AP-24® ANTI-PLAQUE FLUORIDE TOOTHPASTE

This cavity-fighting formula features a plaque-fighting agent that helps remove plaque and debris as you brush. The gentle formula freshens breath with vanilla mint and leaves a clean, fresh-mouth feeling that lasts all day.

**ITEM 01111151 6 oz.**

## AP-24® ANTI-PLAQUE FLUORIDE MOUTHWASH

AP-24® Anti-Plaque Mouthwash fights plaque with patented AP-24 technology and no harmful alcohols. Leaves a long-lasting fresh, clean mouth.

**ITEM 01111152 16.9 oz.**

## AP-24® ANTI-PLAQUE BREATH SPRAY

AP-24® Anti-Plaque Breath Spray fights plaque build-up while freshening breath in a convenient alcohol-free spray.

**ITEM 01111154 1 oz.**

## AP-24® ANTI-PLAQUE TOOTHBRUSH

The AP-24 Anti-Plaque Toothbrush incorporates an exclusive channel bristle technology that helps remove up to 30% more plaque from tooth surfaces.

**ITEM 01111377 3-pack**

## AP-24® WHITENING FLUORIDE TOOTHPASTE

AP-24® Whitening Fluoride Toothpaste lightens teeth without peroxide while preventing cavities and plaque formation. This gentle, vanilla mint formula freshens breath and provides a clean, just-brushed feeling that lasts all day.

**ITEM 01111155 4 oz.**



BEFORE



AFTER







Nu Skin partnered with an award-winning ethnobotanist to create the Epoch product line. Designed in balance with nature, Epoch features efficacious plant wisdom from indigenous cultures.



## NU SKIN FORCE FOR GOOD FOUNDATION

Nu Skin Enterprises' spirit of long-term social responsibility led to the creation of the Nu Skin Force for Good Foundation: a nonprofit organization whose mission is to improve the lives of children by offering hope for a life free from disease, illiteracy, and poverty. Nu Skin donates \$0.25 from every Epoch products sale to the Nu Skin Force for Good Foundation. Charity Vision, Seeds of Hope, and Epidermolysis Bullosa (EB) Medical Research Foundation are just a few examples of the Force for Good Foundation's dedication to fostering long-lasting improvement around the world.



# EPOCH®

Incorporating some of nature's most beneficial ingredients, Epoch® face and body formulas contain skin-beneficial botanicals that soothe and condition.

## SOLE SOLUTION® FOOT TREATMENT

Features crushed allspice berry—traditionally used by the indigenous people of Central America to relieve persistent dry, cracked, red skin on heels, toes, and sides of feet.

**ITEM 01101220 4.2 oz.**

## BAOBAB BODY BUTTER

This deliciously rich cream quenches your skin's thirst with shea butter and the fruit of the African baobab tree. These time-tested ethnobotanicals promote smooth, supple skin that stays touchably soft all day—while enhancing skin resiliency for even softer skin tomorrow.

**ITEM 01102781 4.4 oz.**

## GLACIAL MARINE MUD

This skin renewing estuary treasure helps exfoliate dead skin cells, remove skin contaminants, and rejuvenate damaged or troubled skin. It nurtures your skin with more than 50 beneficial minerals and trace elements, including zinc and sea botanicals.

**ITEM 01110809 7 oz.**

## FIREWALKER® RELAXING FOOT CREAM

Soothe and relax your feet using natural ingredients like Hawaiian ti plant extract traditionally used by Polynesian firewalkers to absorb heat and to cool and soothe the skin. Combined with Babassu oil to provide the perfect amount of moisturization.

**ITEM 01110826 3.4 oz.**

## ICEDANCER® INVIGORATING LEG GEL

Rub in instant relief with this soothing alcohol-free gel formulated with natural wild mint—menthe arvensis—used by Northwestern Native American tribes for soothing the body—and a combination of horse chestnut, eucalyptus, and peppermint oil to stimulate tired, achy legs.

**ITEM 01102803 3.4 oz.**



## BLEMISH TREATMENT

Epoch® Blemish Treatment combines proven pore-clearing acne medicine with Job's tears, used historically in Asia to reduce redness; yarrow, used for centuries to help soothe the skin; burdock, which helps clear up troubled complexions; and skin soothing chamomile extract.

**ITEM 01110845 .5 oz.**



## POLISHING BAR

Containing Glacial Marine Mud and sisku'pas (ground bark)—used by Native Americans of the Pacific Northwest to smooth the skin—this soap-free, all-over deep cleanser effectively cleanses while helping slough off dead skin cells for a smooth, clean feeling.

**ITEM 01110803 3.4 oz.**

## DEODORANT WITH CITRISOMES

Featuring a patented technology utilizing Citrus Aurantium, a small orange used in the Caribbean as a natural deodorizer. This underarm formula also contains grapefruit seed extract for fresh smelling, time-released odor control and chamomile extract to soothe the skin. Leaves no annoying white mark on clothes.

**ITEM 01110802 1.7 oz.**

## BABY HIBISCUS HAIR AND BODY WASH

Contains hibiscus flower extract, used by traditional cultures in Southeast Asia and Central America to help moisturize and maintain a healthy looking scalp while cleansing the skin and hair. This tearless wash dispenses as a foam for easy bathing.

**ITEM 01102897 5 oz.**

## ANTISEPTIC HAND SANITIZER

Containing lavender, which was used by many early Roman, Greek, and European civilizations for its cleansing effects, Epoch® Antiseptic Hand Sanitizer kills 99.99% of the most common germs and bacteria. Unlike other formulas, it is non-drying.

**ITEM 01110833 3.4 oz.**

## EVERGLIDE FOAMING SHAVE GEL

You'll enjoy a smooth, close, comfortable shave with Epoch Everglide. Its rich lather cushions skin against the harsh effects of everyday shaving with mullein, a botanical that grows in the American Southwest and has been used by Native Americans for its soothing properties.

**ITEM 01110805 4 oz.**

## AVA PUHI MONI® ANTI-DANDRUFF SHAMPOO

This botanical shampoo is formulated with clematis leaves, used by ancient Europeans to soothe dry, flaking skin. Ava puhi moni Anti-Dandruff Shampoo contains the extract from the bulb-like flower of the Polynesian ava puhi plant to leave your hair soft and silky.

**ITEM 01102810 8.4 oz.**

## AVA PUHI MONI® CONDITIONER

For generations, Polynesians have squeezed nectar from the ava puhi bulb-like flower directly onto their hair to wash and condition it. Today, Epoch brings you Ava puhi moni Conditioner for smooth, shiny, healthy looking hair.

**ITEM 01102812 8.4 oz.**

**ITEM 01110014 25.4 oz.**

## AVA PUHI MONI® SHAMPOO AND LIGHT CONDITIONER

Now you can enjoy the ava puhi experience with this rich ethnobotanical shampoo and light conditioner. Two products in one, it gently cleanses and hydrates, leaving your hair clean, vibrant, and lustrous.

**ITEM 01102811 8.4 oz.**

**ITEM 01110013 25.4 oz.**







# NU COLOUR®

This complete color line enhances and illuminates your natural beauty—bringing the best of Nu Skin® to color.

# K-BEAUTY

## EYE SHADOW

K-Beauty Eye Shadow Palettes offer complementary shades to create multiple looks from dramatic to subtle. These shades apply evenly and blend well. Design the perfect look for any occasion.

**FOR ITEM NUMBER, SEE COLOR CHART .16 oz.**

## LIP TINT

Iconic hues that will enrich your lips with moisture and shine. Create an irresistible looking pout that's both alluring and flirty.

**FOR ITEM NUMBER, SEE COLOR CHART .33 oz.†**

## LIPSTICK

Instantly enhance your look with the perfect pop of color, while moisturizing and protecting your lips. K-Beauty Lipstick glides on and helps create radiant, full lips with a flawless finish.

**FOR ITEM NUMBER, SEE COLOR CHART .11 oz.†**

## BLUSH

Create a fresh modern look that provides the perfect pop of color. With K-Beauty Blush you can get a radiant flush on your cheeks that is universally flattering.

**FOR ITEM NUMBER, SEE COLOR CHART .20 oz.†**

## EYEBROW SHAPING KIT

The Eyebrow Shaping Kit offers infallible color that will help contour any eyebrow. Shape and define your brows with flattering shades for all brow tones. This kit provides everything you need to keep your brows looking great.

**ITEM 01102852 .14 oz.**

## CURL & LASH MASCARA

Enhance the voluminous look of your eyelashes and help create a beautiful shape with Curl & Lash Mascara.

**ITEM 01102851 .31 oz.**

## LIP PLUMPING BALM

Give your lips an instant boost and perfect your pout. Nu Colour® Lip Plumping Balm will help your lips look fuller, while also helping them to feel moisturized and soft.

**ITEM 01102853 .15 oz.**

EYE SHADOW									
	MOCHA EYE								
	01102868								
LIP TINT	BALLERINA PINK	FLIRTING PINK	PLUM SANGRIA	ORANGE REVOLUTION	CANDY RED	ROSE BEIGE	CORAL SUNSHINE		
	01102857	01102873	01102872	01102858	01102859	01102855	01102856		
	LIPSTICK	RED ELEGANT	MANDARIN CORAL	NECTAR CRUSH	PINK DELIGHT	GINGER RED	CLASSIC BEIGE	RASPBERRY PINK	
		01102864	01102863	01102871	01102862	01102870	01102860	01102861	
		BLUSH	PEACH CLOUD	BLOSSOM PINK	NUDE TAN				
			01102849	01102850	01102869				

### CURL & LASH MASCARA



BEFORE



AFTER

### LIP PLUMPING BALM



BEFORE



AFTER





hello  
beautiful  
beautiful

# NU COLOUR

## ADVANCED TINTED MOISTURIZER BROAD SPECTRUM SPF 15

Formulated with anti-aging ingredients, it helps reduce the appearance of aging upon application and provides color correction to help balance and smooth out the complexion and diminish the look of fine lines and wrinkles.

**FOR ITEM NUMBER, SEE COMPLEXION CHART 1.4 oz.**

## ADVANCED LIQUID FINISH BROAD SPECTRUM SPF 15

Upon application, this advanced product helps lessen the appearance of fine lines, wrinkles, and enlarged pores. Use Nu Colour® Advanced Liquid Finish daily following your anti-aging skin care regimen for bright, flawless matte coverage and younger looking skin.

**FOR ITEM NUMBER, SEE COMPLEXION CHART 1 oz.**

## CONCEALER

Superior polymer technology creates a solid cream concealer that weightlessly offers smooth, long-lasting, buildable coverage without the use of petrolatum or heavy waxes. Supplements skin with beneficial vitamins and botanicals.

**FOR ITEM NUMBER, SEE COMPLEXION CHART .07 oz.**

## CUSTOM COLOUR MOISTURSHADE WET/DRY PRESSED POWDER

Offers versatility with a skin-enhancing formula that reduces shine and absorbs excess oils. Used dry, it glides over the skin leaving a lightweight, soft powder finish. Applied wet with a moistened sponge, it provides flawless makeup coverage with a soft, natural matte finish.

**FOR ITEM NUMBER, SEE COMPLEXION CHART .4 oz.†**

† Compact sold separately.

## FINISHING POWDER

Finishing Powder helps absorb excess oils and reduces shine on your face, ensuring a soft, flawless finish. This ultra-sheer powder is suitable for all skin types and is invisibly matte to work with all skin tones.

**ITEM 01161201 1 oz.**

## CUSTOM COLOUR MOISTURSHADE WET/DRY PRESSED POWDER COMPACT

**ITEM 01101211††**

†† Color refills sold separately.

ADVANCED TINTED MOISTURIZER	PINK 01161138	FAIR 01161113	NATURAL BEIGE 01161139	OCHRE 01161135	PINK OCHRE 01161136
	MEDIUM BEIGE 01161140	SAND 01161114	HONEY 01161115	BEIGE 01161116	MEDIUM OCHRE 01161137

ADVANCED LIQUID FINISH	SOFT BEIGE 01160854	SUNNY BEIGE 01160856	SUNSET BEIGE 01160858	NEUTRAL BEIGE 01160853	BEIGE 01160862	OCHRE 01160863	DELICATE IVORY 01160855	MEDIUM BEIGE 01160867
	ALMOND 01160857	MEDIUM OCHRE 01160866	PINK 01160864	PINK OCHRE 01160865	HONEY BEIGE 01160861	TAWNY 01160859	MOCHA 01160860	

CONCEALER	LIGHT 01161301	CREAM 01161302	MEDIUM 01161303	TAN 01161304	DEEP 01161305
	COOL			WARM	

CUSTOM COLOUR MOISTURSHADE WET/DRY PRESSED POWDER	CREAMY IVORY 01160401	PORCELAIN BEIGE 01160402	VANILLA BEIGE 01160403	BUFFED IVORY 01160405	NATURAL HONEY 01160406	SOFT AMBER 01160407
---	--------------------------	-----------------------------	---------------------------	--------------------------	---------------------------	------------------------



## LIPS

### REPLENISHING LIPSTICK

Enhances the appearance of your lips by providing rich, nonfeathering color and the added protection of a patented ingredient that provides powerful antioxidant, tissue-nurturing benefits for smooth, youthful looking lips.

**FOR ITEM NUMBER, SEE LIPS CHART .14 oz.**

### CONTOURING LIP GLOSS

This ultra shiny gloss features an oligopeptide to define and contour lips, focusing on the “cupid’s bow” that tends to fade with age. The peptide helps you achieve the full, shapely lips you desire.

**FOR ITEM NUMBER, SEE LIPS CHART**

**.5 oz.**



## EYES

### EYE SHADOW

These velvety-soft shadows blend smoothly to accentuate and enhance your eyes. The smooth, easy-to-blend texture comes from jojoba, conditioners, and combined micropowders. Available in a range of classic shades. Fade and crease-resistant formula.

**FOR ITEM NUMBER, SEE EYES CHART**

**.06 oz.†**

† Compact sold separately.

### DEFINING EFFECTS MASCARA

Nu Colour® Defining Effects Mascara is specially formulated to separate lashes, giving them length and definition without clumping and without any harmful or irritating ingredients.

**.24 oz.**



### DEFINING EFFECTS SMOOTH EYE LINER

Defining Effects Smooth Eye Liner glides on smoothly, giving you complete control. Its gentle, creamy consistency makes it easy to achieve any makeup effect: fine, precise lines; softly blended lines; or a smokey, smudged evening look.

**.04 oz**



## CHEEKS

### CUSTOM COLOUR SUBTLE EFFECTS BLUSH

Subtle Effects Blush features micropowders, which create a silky, blendable texture that lets you define a variety of gorgeous looks. Long-lasting, fashion-conscious colors.

**FOR ITEM NUMBER, SEE CHEEKS CHART**

**.12 oz.†**

† Compact sold separately.



COOL			
BABY PINK 01160101	PETAL PINK 01160102	TICKLED PINK 01160103	DUSTY PINK 01160104
ANTIQUÉ ROSE 01160105	FLUSHED 01160106	PINK PARADISE 01160107	BERRY GLAZE 01160108

WARM				
CORAL GLOW 01160111	CHAMPAGNE KISSES 01160112	BRANDY 01160114	SUNSET 01160115	CHA CHA RED 01160119

COOL	WARM	NEUTRAL
SWEET PINK 01160904	TENDER BEIGE 01160905	CRYSTAL CLEAR 01160902

COOL				WARM			NEUTRAL
DIAMOND DUST 01160201	SHELL 01160202	AMETHYST 01160204	AZALEA PINK 01160205	FRENCH VANILLA 01160211	TANGERINE DREAM 01160214	SANDY GOLD 01160215	PEARL GREEN 01160218
LAVENDER 01160206	BABY BLUE 01160207	SLATE GREY 01160220	SMOKE 01160221	FAWN BROWN 01160216	ESPRESSO 01160217		

### DUAL PENCIL SHARPENER

**ITEM 01102773**

### CUSTOM COLOUR DESIRED EFFECTS EYE SHADOW COMPACT

**ITEM 01102756††**

†† Color refills sold separately.

### NU COLOUR® NUTRIOL® EYELASH TREATMENT

Featuring Tricalgoxyl, a seaweed derivative rich in polysaccharides, this clear gel strengthens and lengthens delicate lashes from roots to tips. Perfect alone or under mascara, this conditioning formula is the ultimate in lash care.

**ITEM 01161801 5 ml**

### CUSTOM COLOUR SUBTLE EFFECTS BLUSH COMPACT

**ITEM 01102763††**

†† Color refills sold separately.